



# Continuous Re-Commissioning Technology Whose Time Has Come

---

*Discover how AI-powered continuous commissioning transforms building performance, delivering guaranteed savings while improving occupant comfort, health, and productivity.*

Reduce Your Energy Footprint •••  
**ENERGYPRINT®**



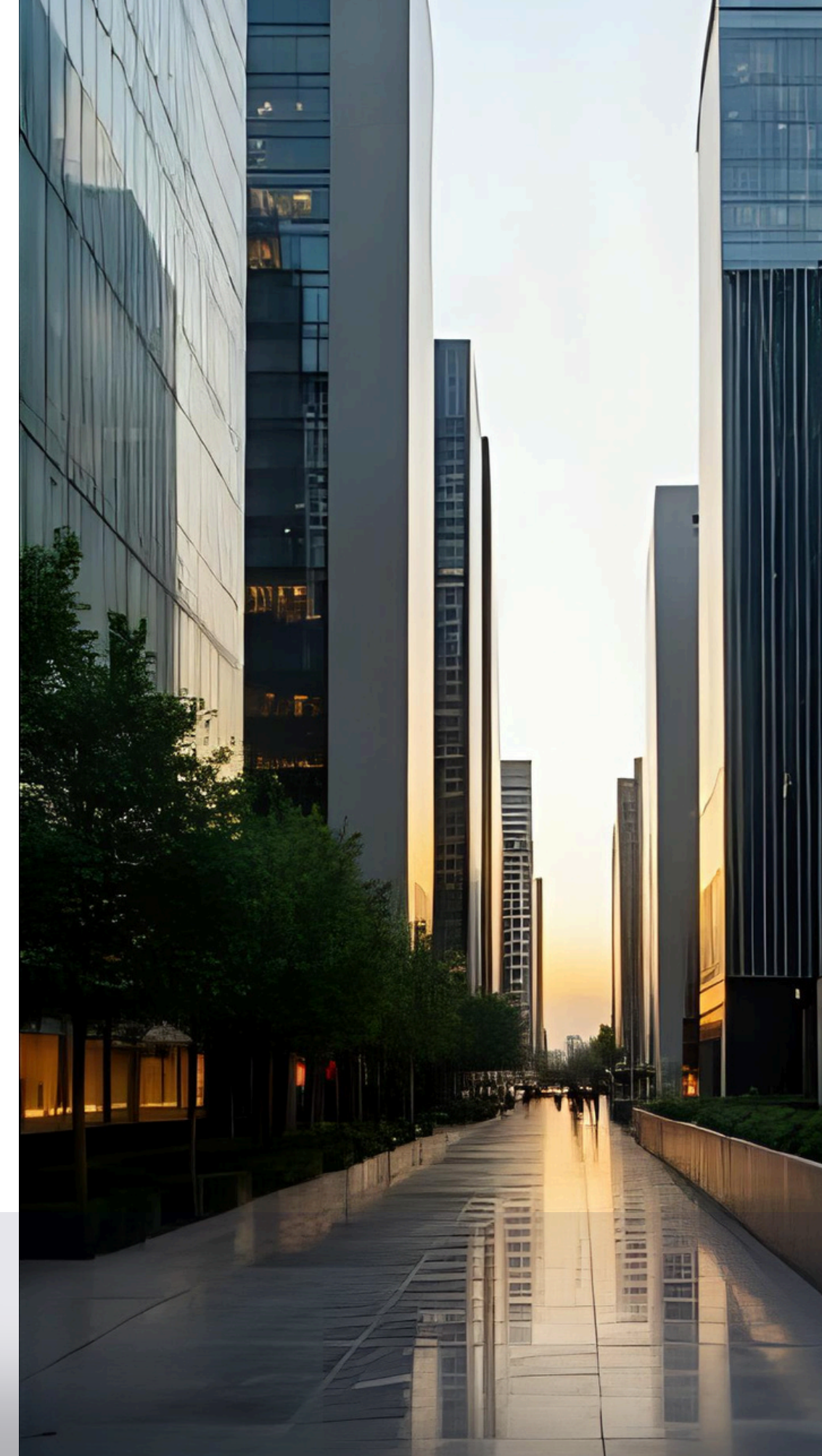
# Why Buildings Drift Out of Optimal Performance

---

Building systems don't stay optimized forever. Over time, multiple factors conspire to degrade performance and drive up energy costs:

- Tenant loads shift as offices are reconfigured and occupancy patterns change
- Service technicians alter controls to address immediate occupant complaints
- Set-points get changed for unusual needs – crowded meeting rooms, extreme weather conditions
- LED retrofits reduce heat gain, but cooling capacity remains unchanged
- Original settings are forgotten or never documented

***The result?*** Systems gradually fall out of kilter, wasting energy while potentially compromising comfort and indoor air quality.



# The Traditional Re-Commissioning Dilemma

## *When Should You Re-Commission?*

- When occupants complain about comfort
- When productivity visibly declines
- When air quality issues emerge
- When energy bills spike unexpectedly

## *The Cost-Benefit Question*

Traditional re-commissioning makes financial sense when the increase in energy bills exceeds the cost of a full audit and tune-up.

But by then, you've already wasted months or years of excess utility spend and suffered reduced occupant satisfaction.



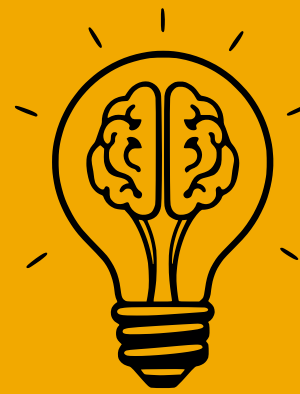


# Imagine a System That Re-Commissions Itself



## ***Continuous Monitoring***

AI tracks sensors and controls in near-real time, 24/7/365



## ***Intelligent Analysis***

Asks the same questions a qualified re-commissioning engineer would



## ***Real-Time Response***

A re-commissioning audit event every 15 minutes, not once every few years

*This isn't a future vision – **it's available today** with AI-powered continuous commissioning technology.*



# How EnergyPrint's Continuous Commissioning Works

---

## ***#1 Comprehensive Data Collection***

We monitor utility invoices and track data from your existing building management system. Where needed, we add sensors, controls, and automation to fill data gaps.

## ***#2 AI-Powered Analysis***

Our proprietary AI re-commissioning system analyzes this data continuously – every hour, every day – looking for anomalies and optimization opportunities.

## ***#3 Expert Evaluation***

Our engineering team evaluates AI-generated recommendations that arise from real-time analyses, ensuring actions are appropriate and effective.

## ***#4 Proactive Action***

We implement changes to keep your building running effectively and efficiently, preventing problems before they impact comfort or costs.



# The Impact: Real Results Across Three Critical Dimensions

---

## *Energy Savings*



Optimize HVAC, lighting, and other systems for maximum efficiency without compromising performance.

## *Reduced Absenteeism*



Better air quality and thermal comfort lead to healthier, more productive employees.

## *Reduced Maintenance*



Early alerts and remote tuning of setpoints and controls reduce maintenance visits to diagnose and resolve issues.

***How much will your facility improve?*** We answer these questions as part of our service with detailed monthly reporting and ongoing measurement.



# Proven Track Record: 15 Years of Consistent Performance

---

**12.7%**

## ***Average Energy Savings***

Across all customers over 15 years of continuous commissioning services

**100%**

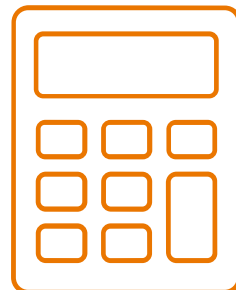
## ***Cost Recovery Guarantee***

Our mission is to pay for everything we do from utility expense savings

**15**

## ***Years of Excellence***

*Proven expertise in continuous commissioning and building optimization*



**Calculate Your Potential Savings:** Take a look at your company financial statement and multiply 12.7% times your annual utility spend. That's your opportunity. Our cost is ***always*** less than the savings we generate.



# A Different Financial Model: We Pay for Ourselves

---

## ***The Wrong Question***

*What does this service cost?*

This traditional procurement mindset misses the transformative nature of continuous commissioning.

## ***The Right Question***

*How much net savings can we capture while improving comfort, absenteeism, and productivity?*

EnergyPrint fees are *always* less than savings in utility and maintenance costs. The right question is, ***How much of a net cashflow gain will EnergyPrint deliver?***

***EnergyPrint doesn't cost you money. We pay for our services from the savings we generate and deliver net positive cash flow into your utility account every single month.***



# Monthly Transparency: See Your Savings in Black and White

---

## Comprehensive Monthly Reporting

Unlike traditional one-time commissioning projects, continuous commissioning provides ongoing visibility:

- Weather normalized utility savings
- Value of service visits eliminated
- Absenteeism reductions
- Sensor metrics and trends
- Actions taken and results achieved
- Net positive cash flow by month

***You'll always know exactly what value you're receiving.***







# Continuous Re-Commissioning from EnergyPrint Technology Whose Time Has Come

---



## ***Guaranteed Savings***

*We only succeed when you save money*



## ***Proven Results***

*12.7% average savings over 15 years*



## ***Continuous Optimization***

*Re-commissioning every 15 minutes, not every few years*

[Schedule a Demo](#)

[Learn More About Our Process](#)